

Statewide Multimodal Transportation Plan



MINNESOTA **GO**

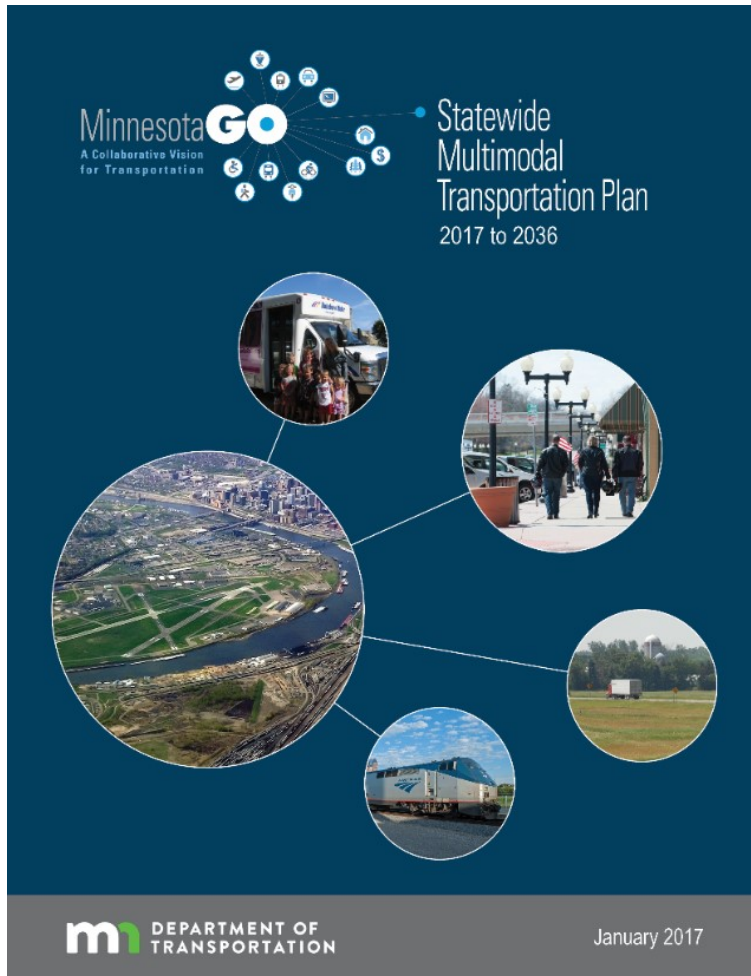
20-Year State Highway Investment Plan



Update of SMTP and MnSHIP Process

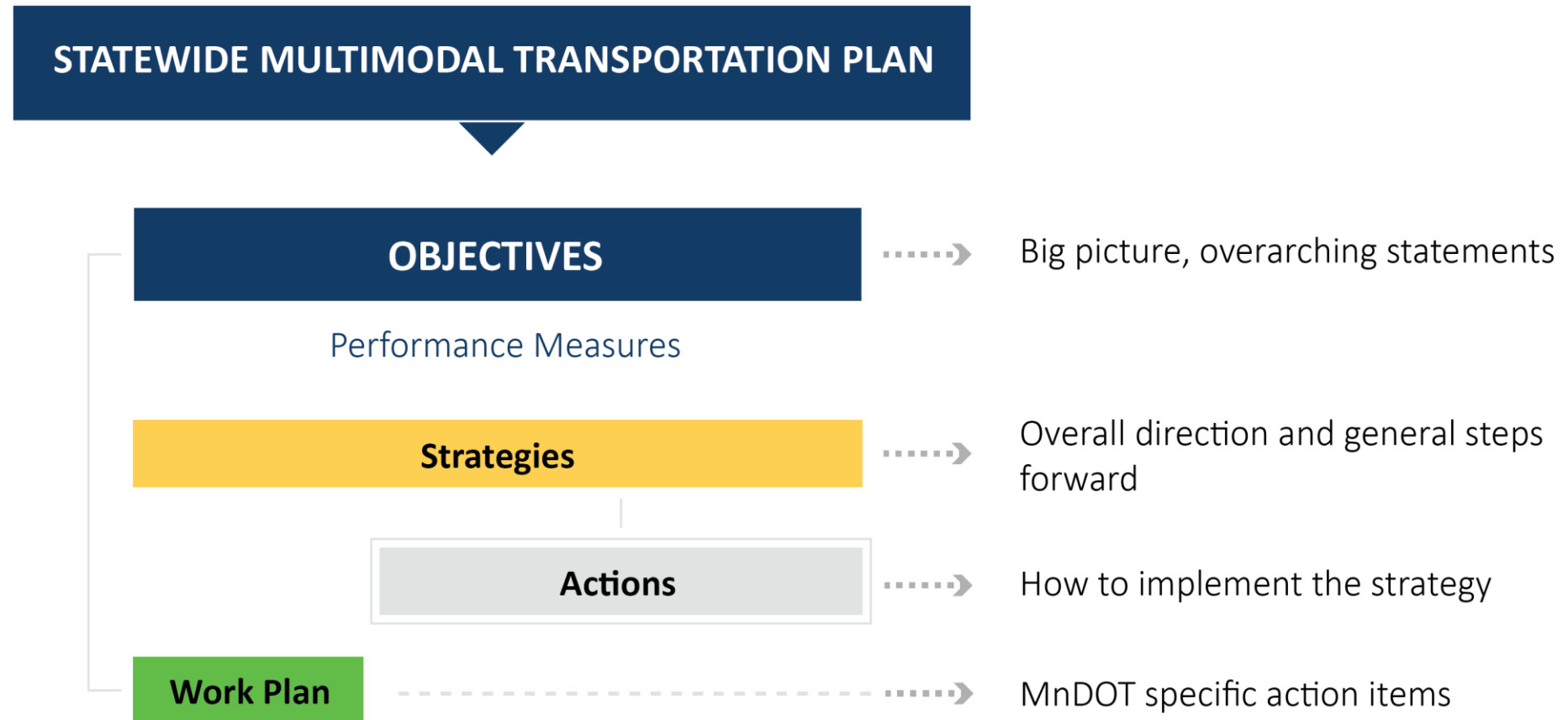
December 3, 2021

Statewide Multimodal Transportation Plan



- 20-year plan developed by MnDOT, but covers all transportation
- Overarching objectives, strategies and performance measures for all modes
- Work plan for MnDOT
- Update due 2022

SMTP Policy Structure



Stakeholder Forums

- Upcoming forum to review key proposed policy guidance with broader transportation community
 - Dec 7 (1:00 – 4:00 pm)

www.minnesotago.org/give-us-your-input/smtip

2020 JANUARY **PROJECT BEGINS**
PLAN REVIEW AND TREND ANALYSIS BEGINS

NOVEMBER **PUBLIC LAUNCH** Engagement begins

2021 JANUARY **MNSHIP BEGINS**

FEBRUARY **STRATEGY DEVELOPMENT** Work groups start

AUGUST **WORK PLAN DEVELOPMENT** Work groups end

SEPTEMBER Workshops 1 and 2

OCTOBER **PLAN DEVELOPMENT**

2022 JANUARY **COORDINATION** With partners and stakeholders

APRIL **DRAFT PLAN** Public comment period

MAY

SUMMER **FINAL PLAN** Plan adopted and implementation begins

IMPLEMENTATION

We are here!

Statewide Multimodal Transportation Plan

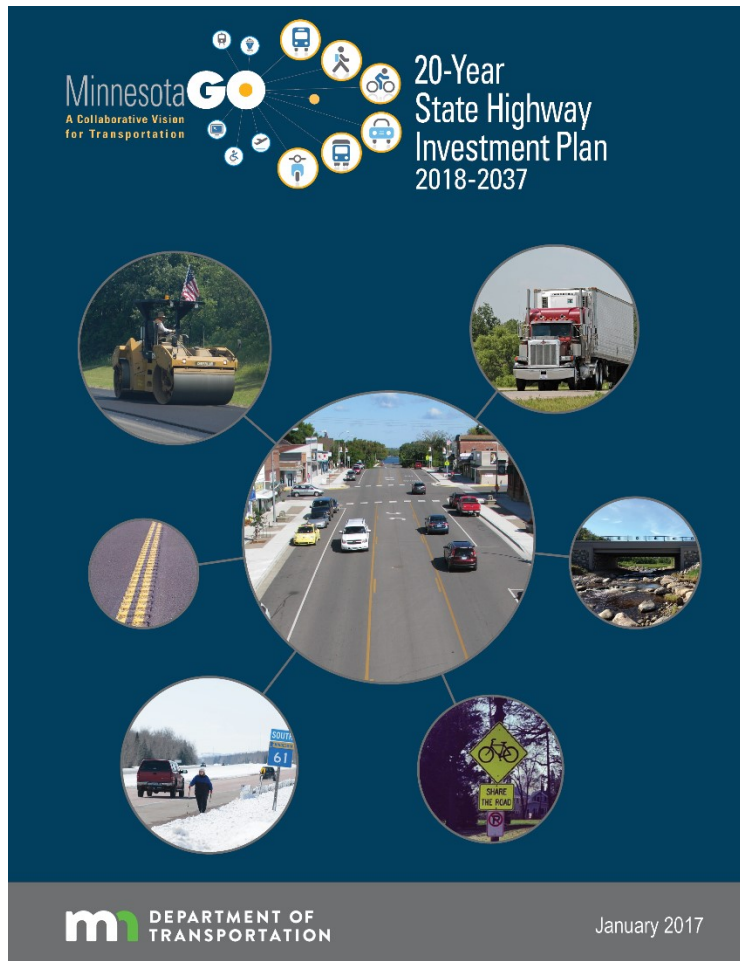


MINNESOTA GO

Ashley Zidon, SMTP Project Manager

Ashley.Zidon@state.mn.us

Minnesota State Highway Investment Plan



- Directs capital investment on state highway network
- 20-year, fiscally constrained plan
- Categorical, not project specific
- Investment direction informs the guidance for project selection
- Update due in 2023

MnSHIP Update Process

STEP 1

1 BACKGROUND INFORMATION

What is directing this plan?

STEP 2

2 NEEDS IDENTIFICATION

What investments are needed and what outcomes could we achieve?

STEP 3

3 REVENUE PROJECTIONS

How much state highway funding is projected over the next 20 years?

STEP 4

4 SCENARIO DEVELOPMENT

What mix of investments should MnDOT prioritize?

STEP 5

5 INVESTMENT DIRECTION

What are the strategies for investing over the next 20 years?

STEP 6

6 IMPLEMENTING NEXT STEPS

How does the investment direction impact project selection?

PUBLIC ENGAGEMENT AND OUTREACH

STAKEHOLDER AND TRIBAL GOVERNMENT INPUT OPPORTUNITIES IN PLAN DEVELOPMENT

DRAFT MnSHIP Investment Categories

SYSTEM STEWARDSHIP

Pavement Condition
Bridge Condition
Roadside Infrastructure
Rest Areas

CRITICAL CONNECTIONS

Highway Mobility
Freight
Pedestrian and Bicycle

CLIMATE ACTION

Climate Resilience*

TRANSPORTATION SAFETY

Transportation Safety
Advancing Technology*

HEALTHY EQUITABLE COMMUNITIES

Local Partnerships*
Main Streets/Urban Pavements*

*New categories for 2022 MnSHIP Update

DRAFT

Investment Approaches for Public and Stakeholder Engagement



Pause in MnSHIP Update Process

- First round of public engagement delayed
- Allows for additional independent review of need calculation
- Need estimate in MnSHIP is often cited in the media and discussions at the Minnesota Legislature
- Allows more time to incorporate any policy direction or strategies changes from the SMTP update

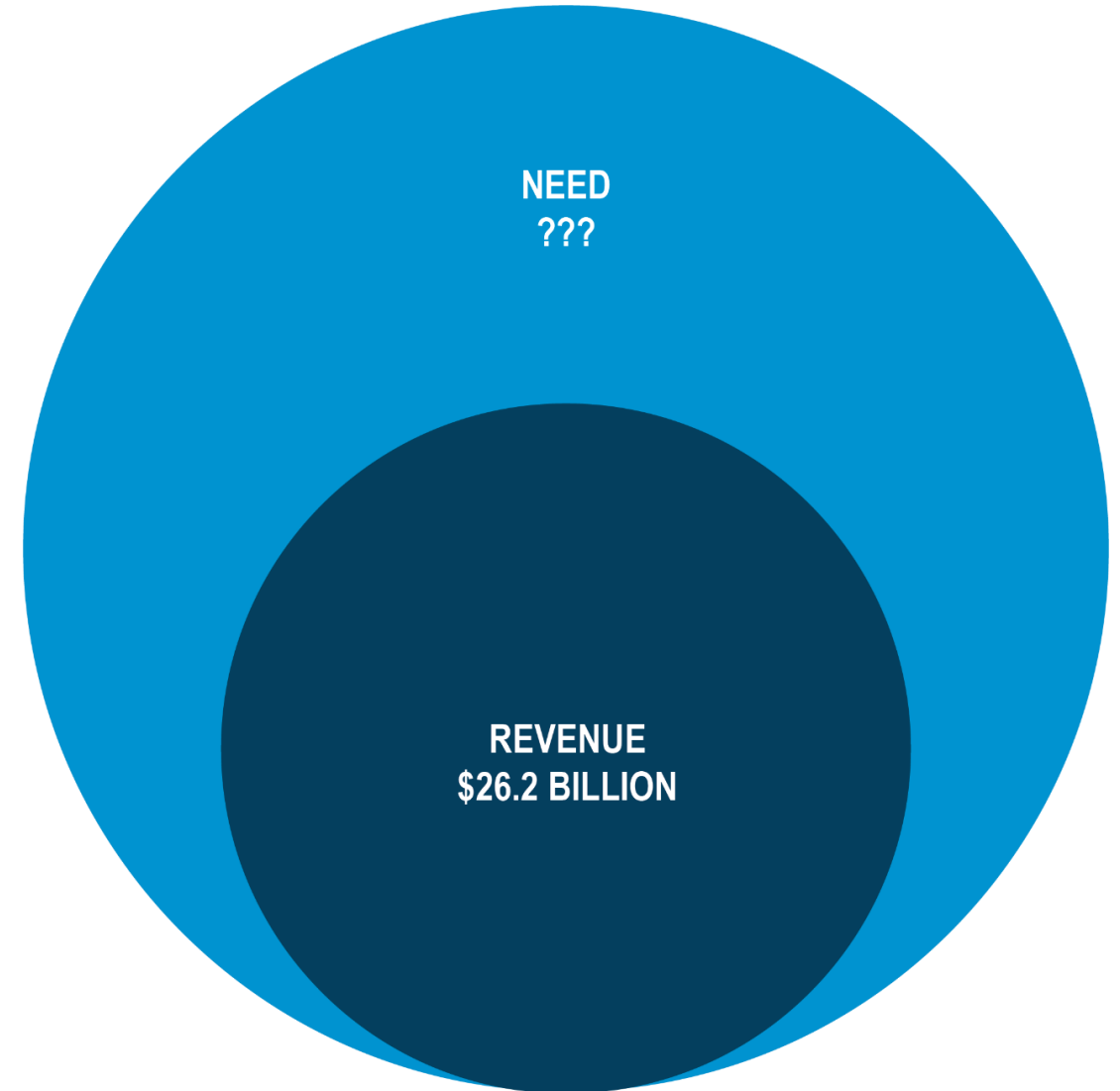
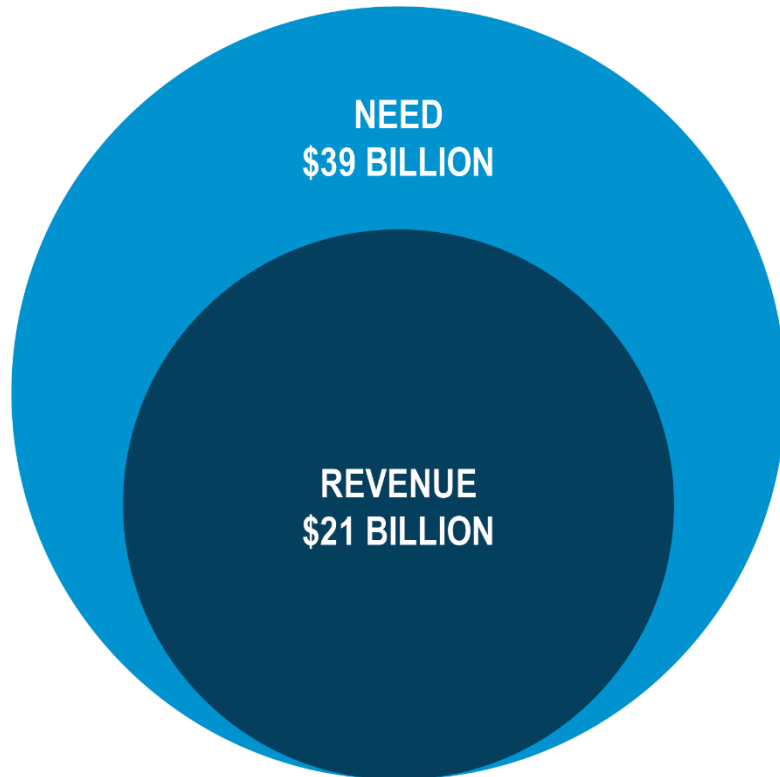
Definition of Need in MnSHIP

- Meet a performance target
- Meet an objective or implement a key strategy (if there are no defined performance targets)

Investment Need vs Projected Revenue

2022 MnSHIP

2017 MnSHIP



Understanding Impact of New Federal Infrastructure Bill

- Delay also allows incorporation of impacts of bill in MnSHIP
- Update revenue projections
- Understand impact of any new funding programs
- Adjust any investment categories to reflect priorities in the bill

Timeline Implications

- 3rd Party Review: December – March
- MnSHIP Engagement: April – June
- Draft Investment Direction: July-August
- Draft MnSHIP document anticipated late Fall 2022

Thank you again!

Josh Pearson
MnSHIP Project Manager
Joshua.Pearson@state.mn.us

www.minnesotago.org

MINNESOTA **GO**